

SOLUTION

MRP RANGE

Whole-House Filter ₹1,00,000 — ₹2,00,000

HomeSoft range · 2K-6K LPH for residential homes

MRP inclusive of GST. Single-vessel pricing; a 4-stage train (sediment + iron + carbon + softener) at a given tier is 4× the per-vessel price.

One unit at the inlet, treating every tap in the home before the water reaches anything else. Whole-house filtration is the architecturally honest solution: a single installation in the utility room or basement, automatic operation, no per-bathroom replication. Available as sediment, iron, carbon, or softener — usually specified in combination as a 2-4 stage train.

CAPACITY TIERS

2K	2000 LPH	3-5 BHK homes · 12" × 48" vessel
4K	4000 LPH	5+ BHK villas · 15" × 60" vessel
6K	6000 LPH	Medium complexes, hotels, schools · 18" × 72" vessel

KEY SPECIFICATIONS

Vessel material

Fibre-reinforced polymer (FRP), rated 6 bar

Stages available

Sediment (river sand), iron (catalytic media), carbon (IV 900 activated carbon), softener (food-grade SAC resin)

Filtration grade

20-50 microns (sediment), iron up to 8 ppm, manganese up to 1 ppm, hardness up to 600 ppm CaCO_3

Operation

Fully automatic timer-operated multiport valve (MPV) on every SKU

Operating pressure

1-6 bar

Drain requirement

Mandatory — single line for backwash + brine discharge

Required train order

Sediment first → iron → carbon → softener (downstream protection)

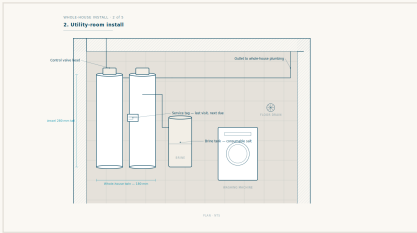
OBR / regen frequency

2K softener: 5,000 L / 10 kg salt · 4K: 10,000 L / 20 kg · 6K: 20,000 L / 40 kg (at 300 ppm)

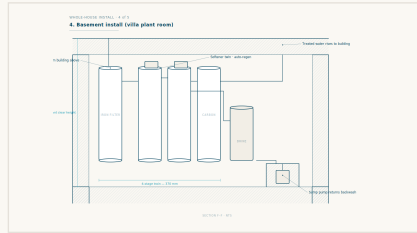
WATER PROBLEMS ADDRESSED

- Whole-property iron staining — every bathroom, every floor
- Whole-property hard water — scale in every geyser, every washing machine, every tap
- Chlorine and odour from municipal supply
- Sediment / turbidity blinding downstream treatment

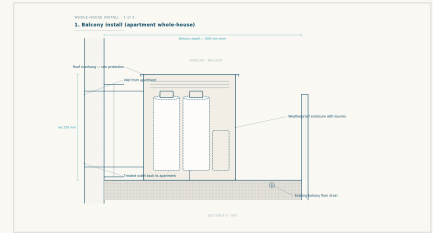
INSTALL CONTEXT



Utility room



Basement plant



Apartment balcony

AMC SCOPE

Monthly inspection, MPV function check, media assessment, parameter logging. Salt refill quarterly for softener. Media replacement at 18-24 months (iron) or 3-5 years (carbon).

*Treat once at the inlet. Every downstream fitting protected, every floor served.
Specifications subject to revision. Confirm capacities at site survey.*